



# Release Notes

GEOSPATIAL DIVISION  
24 SEPTEMBER 2018

## TRIMBLE SURVEY GNSS FIRMWARE

### Trimble Survey GNSS Firmware Version 5.37 (September 2018)

#### Requirements

This firmware version includes fixes and enhancements to the Survey Receiver Firmware.

**Note:** For best results, users should upgrade to Trimble Access 2018.10 (or 2017.21 for legacy controllers) or later when using Survey GNSS Receiver Firmware version 5.37.

#### Supported GNSS Receivers

The following tables identify the Survey GNSS receivers supported by this revision.

Integrated	
Receiver	Support
Trimble R10-2/R10/R10 LT	•
Trimble R8s/R8s LT	•
Trimble R8 Model 4	•
Trimble R8 Model 3	•
Trimble R8 Model 2	-
Trimble R8 Model 1	-
Trimble R6 Model 4	•
Trimble R6 Model 3	•
Trimble R6 Model 2	-
Trimble R6 Model 1	-
Trimble R4 Model 3	•
Trimble R4 Model 2	•
Trimble R4 Model 1	-
Trimble R2 Model 1	•

Modular	
Receiver	Support
Trimble R9s	•
Trimble NetR9 Geospatial	•
Trimble R7 Model 2	-
Trimble R7 Model 1	-
Trimble R5	-
Trimble 5700 Model 2	-
Trimble 5700 Model 1	-

Handheld	
Receiver	Support
Trimble Geo7X	-
Trimble GeoXR	-
Trimble R3	-

This document is for informational purposes only and is not a legally binding agreement or offer. Trimble makes no warranties and assumes no obligations or liabilities hereunder.

Geospatial Division, 10368 Westmoor Drive, Westminster, CO 80021, USA

[www.trimble.com](http://www.trimble.com)

© 2018, Trimble Inc. All rights reserved. Trimble and the Globe & Triangle logo are trademarks of Trimble Inc. registered in the United States and in other countries. All other trademarks are the property of their respective owners.

## Firmware Warranty Dates

To upgrade your receiver's firmware, a current and valid receiver warranty is required. Your warranty must cover the time period beyond the first day of the month of the "Warranty Date".

Example: You purchase a Trimble R10 receiver on 1 June 2013 with the standard one-year firmware support warranty. Your warranty end date will be June 2014. Since the end date is beyond May 2014, you can upgrade your receiver to v5.00.

Version	Release Date	Warranty Date
5.37	September 2018	June 2017***
5.34	March 2018	June 2017
5.33	January 2018	June 2017
5.32	December 2017	June 2017
5.30	July 2017	June 2017
5.22	March 2017	May 2015
5.20	December 2016	May 2015**
5.15	September 2016	May 2015**
5.14	May 2016	May 2015
5.11	December 2015	May 2015
5.10	September 2015	May 2015
5.03	June 2015	May 2014
5.01	April 2015	May 2014
5.00	March 2015	May 2014
4.93	November 2014	May 2014
4.91	September 2014	May 2014
4.90	June 2014	May 2014
4.84	December 2013	April 2013
4.81	July 2013	April 2013
4.80	April 2013	April 2013
4.71	February 2013	March 2013*
4.70	January 2013	March 2013*
4.64	February 2013	March 2013
4.63	October 2012	August 2012
4.61	March 2012	March 2012
4.44	December 2011	April 2011
4.43	August 2011	April 2011
*Trimble R10 Warranty Date = August 2012		
**Trimble R9s and R10 Warranty Date = May 2014		
***Trimble R8s, R8-4, R8-3, R6-4, R6-3, R4-3, R4-2 Warranty Date = March 2010		

## Version 5.37 Release Notes

The release notes describe the added features and improvements made to Trimble Survey GNSS receiver firmware.

Issue	Type	R10-2	R10	R9s	NetR9	R8s	R8 <sup>1</sup>	R6 <sup>2</sup>	R4 <sup>3</sup>	R2
GNSS signal tracking & processing enhancements	Enhancement	•	•	•	•	•	•	•	•	•
General WebUI enhancements	Enhancement	•	•	•	•	•	•	•	•	•
Bluetooth connection issues with R8/R8/R4 receivers & TSC7/T10	Bug Fix					•	•	•	•	
R10-2 Bluetooth unable to connect after issuing disconnect	Bug Fix	•								
CMRx corrections output when reference station is too far from current position	Bug Fix	•	•	•	•	•	•	•	•	
RINEX 3.02 combined ephemeris header errors	Bug Fix	•	•	•	•					•
RTCM MSM 1013 output errors	Bug Fix				•					
Add Trimble R4s antenna information	Enhancement	•	•	•	•	•	•	•	•	•

1 R8 Model 4, R8 Model 3

2 R6 Model 4, R6 Model 3

3 R4 Model 3, R4 Model 2

**Before** you update the receiver, download and backup any data files that are on the receiver. This update **will** format the internal memory on certain receiver models.

## Trimble Installation Manager

Trimble Installation Manager is a free download and can be found here:

<http://www.trimble.com/installationmanager>

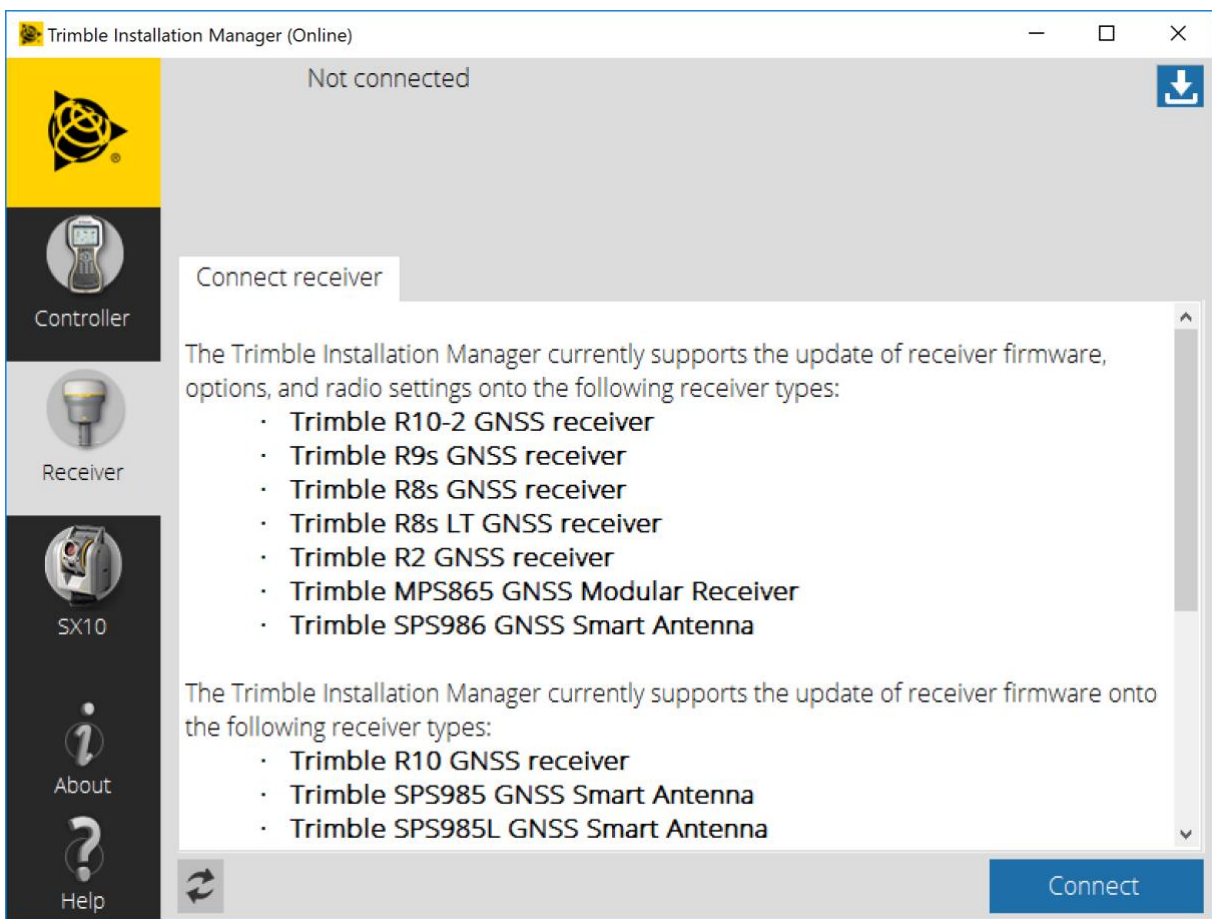
The primary Trimble Installation Manager features for GNSS receivers are:

- Warranty Activation
- Option Loading
- Radio Configuration
- Firmware Installation

The following GNSS receivers are currently supported:

- Trimble R2 (Warranty Activation, Option Loading, Radio Configuration, Firmware Installation)
- Trimble R8s (Warranty Activation, Option Loading, Radio Configuration, Firmware Installation)
- Trimble R9s (Warranty Activation, Option Loading, Radio Configuration, Firmware Installation)
- Trimble R10 (Firmware Installation)
- Trimble R10-2 (Warranty Activation, Option Loading, Radio Configuration, Firmware Installation)


After the installation process is complete, launch Trimble Installation Manager, connect the receiver with the appropriate data cable to your computer and click on **Connect**.

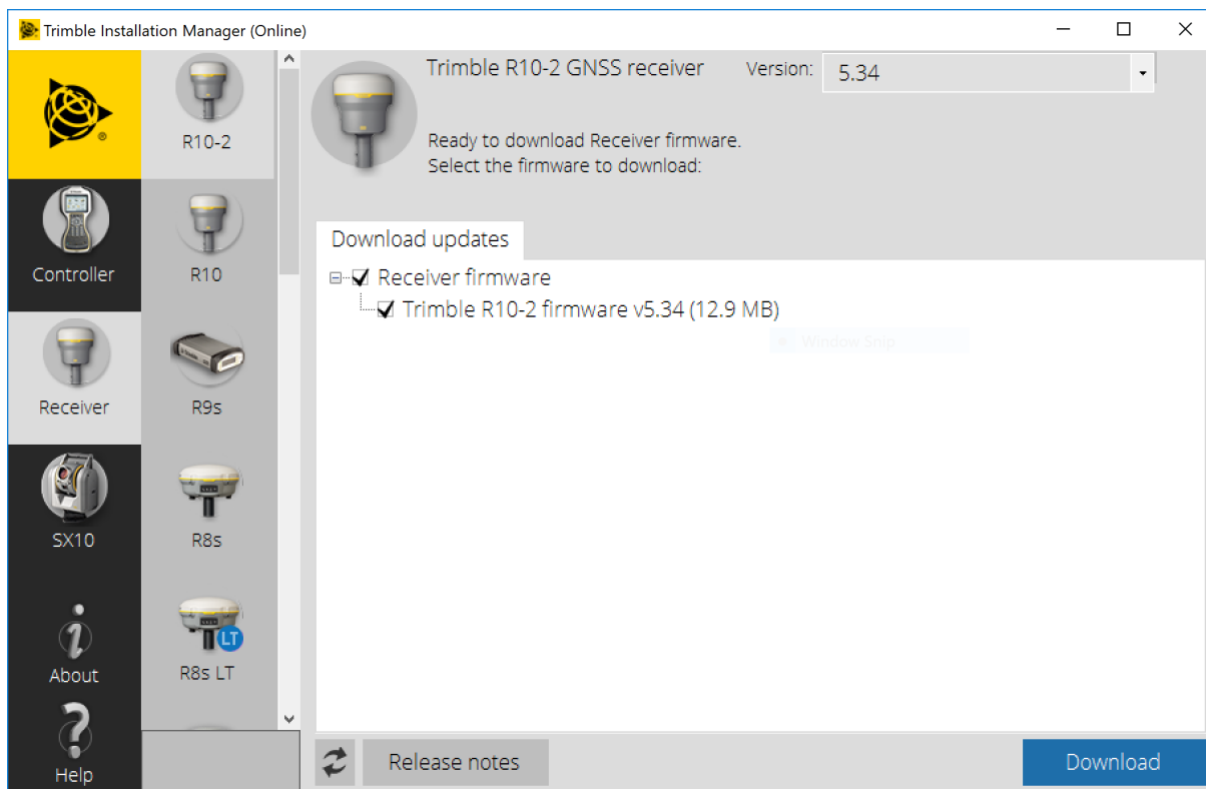


Trimble Installation Manager will display receiver-specific information. Select the firmware version you would like to install from the selection menu in the top right corner. Click on **Install** to start the installation process.

### Download Trimble Survey GNSS Firmware to a Local Machine using Trimble Installation Manager

The latest version of Trimble Survey GNSS firmware for supported receivers can now be downloaded and saved to your local machine via Trimble Installation manager.

1. Launch Trimble Installation Manager – it is not necessary to have a receiver connected to your computer.
2. Click the Receiver tab.
3. Click the Download button in the upper right corner. 
4. Select the appropriate receiver model on the left.
5. Select the desired firmware version from the dropdown menu in the upper right – the latest release is selected by default.
6. Click Download.
7. Browse to the location where you would like to save the file and click OK – the firmware file will automatically be saved to a folder labeled with the receiver model and firmware version.



## Download Information for Trimble Survey GNSS Firmware not using Trimble Installation Manager

The latest version of Trimble Survey GNSS Firmware can be downloaded from the Trimble website within the support page of each supported receiver.

1. Go to [www.trimble.com](http://www.trimble.com).
2. Click on the *Support & Training* link at the top of the page.
3. Select *Support A-Z* from the drop-down menu.
4. Find your receiver on the list of supported products.  
**Hint:** Click on the associated first character of your receiver type. All survey receivers fall under "T" for "Trimble XX Receiver."
5. Click on the link for your receiver type.
6. Click on the *Downloads* link.
7. The latest firmware version should be located at the top of the page.
8. Click on the link to the latest version.
9. Your browser will begin downloading the latest Winflash utility installer that contains your firmware.
10. At this point you can save the Winflash installer to a local folder or click on *Run (Open)* to begin installing the utility.  
**Note:** You may need to accept some security warnings based on your computer configuration.

### Installing Winflash Utility

At this point you will continue from the last step above or if you have saved the downloaded Winflash utility, you must navigate to the folder that contains the file and click on *WFC-Rx-5x-vxxx.exe*. (xxx = latest firmware version).

1. The Winflash installer will start. Click on the *Next* button.
2. Read the License Agreement and click on *Yes* to accept the terms.
3. At this point the Winflash installer will try to detect any previous versions of Winflash on your system
  - i. If the Winflash installer detected a previous version of Winflash on your computer, it will display the current Winflash folder in use. Click on *Next*.
  - ii. If the Winflash installer does not detect a previous version of Winflash on your computer, it will ask you to accept the default folder for Winflash. If you do not want to use the default location then:
  - iii. Click on the *Browse...* button and navigate to the desired folder location you want to use.
  - iv. Click *Ok* to accept the new location.
  - v. Click on *Next* to continue.
  - vi. Select the Program Folder location for the program icon, and then click on *Next*.
4. Winflash installer will now install all required files to run the Winflash utility.
5. The Winflash installer will now ask if you want to register Winflash. You have three options:
  - a. **Register via the Internet** (web access required)
  - b. **Register by Fax or Mail**. Selecting this option will open a document. Complete the document and fax or mail to Trimble.
  - c. **Register Later**.
6. The Winflash installation is now complete.

## Loading New Firmware

Use the Winflash utility to install the latest firmware on your Trimble GNSS receiver.

1. Click on the *Winflash* icon added to the Start menu on your computer.
2. Click on the *Device type* (receiver group) for your receiver type.
3. Click on the *PC serial port* drop down menu to select the serial port your receiver is connected to.
4. Click on the *Next* button.
5. From the *Operations* list box, click on the *Load GPS software* operation.
6. Click on the *Next* button.
7. Click on the *Available Software* for your receiver and the firmware you just downloaded. If you have installed firmware before, the firmware versions are still available in the listing.
8. Click on the *Next* button.
9. The next screen shows the current settings and actions to be taken by the Winflash utility.
10. Click on the *Finish* button.
11. Winflash will now load the latest firmware onto your receiver. This procedure can take several minutes. If the firmware loads correctly, then click on the *Exit* button.

## Loading the USB Driver

This version of Winflash includes the USB driver necessary to connect the Trimble R10 with USB to your computer. Your PC will assign a COM port as your USB connection. This step is not necessary for Windows 10 users or for users who have previously installed the Trimble USB driver.

Once you have installed Winflash, the USB Driver installer is found in the Program Files\Common Files\Trimble\USB Driver<sup>1</sup> folder. Follow the steps below to install the USB Driver.

1. Using Windows Explorer (or equivalent), navigate to the *Program Files\Common Files\Trimble\USB Driver<sub>1</sub>* folder on your computer.
2. Double click on the *Win7\_USB\_Installer.exe* file in the folder. A *Device Driver Installation Wizard* dialog box will open. **Note:** If you are running Windows 7 64-bit, you will see a second dialog box, which automatically loads the 64-bit USB driver.
3. Click on the *Next* button if the installation wizard to continue.
4. The USB Driver will install and present you will and dialog showing the USB drivers that were installed. Click the *Finish* button.
5. The USB Driver is now installed. **Note:** The Windows 7 64-bit USB driver will complete its installation.
6. Plug the USB cable into the USB port of the R10, and then plug the other end into your computer. Your computer will find the device and assign a COM Port for the USB connection. A message is displayed in the Taskbar indicating which COM port the USB is assigned to.

<sup>1</sup>For Windows 7 users, the *USB Driver* folder is located in *Program Files (x86)\Common Files\Trimble\USB Driver*

## For More Information

For more information, please contact your local Trimble Distribution Partner.